



You can check it out on youtube.
Please take a look!

Tōkaidō Okitsu-shuku: Then and Now

<https://youtu.be/ZqythOcPem8>



二峠六宿道旅推進実行委員会



令和2年度文化芸術振興補助金

Executive Committee for the Advancement of Road Travel to the Two Passes and Six Post Stations

Received the art and culture promotion budget supported by the Agency for Cultural Affairs in 2020

Gohyaku-Rakan (500 arhat),

東海道二峠六宿

興津宿

Tōkaidō Ni-tōge Roku-shuku,
Okitsu-shuku

Seikenji Temple



Seikenji Temple at night
The temple was established
as a checking station
by Emperor Tenmu 1300 years ago.



Okitsu-gawa River is on the West side of Satta Pass. The field had many dramatic battles in Sengoku period.

The station protected people from the “barbarians” of the east, and later transformed to the temple. The temple and its surrounding area prospered by the support from Ashikaga Takauji, Imagawa Yoshimoto and Tokugawa Ieyasu. The site was used by diplomats from Ryukyu and Korea.



Highlights of Okitsu-shuku

Kiyomi-gata Coast which once entertained a lot of visitors including imperial family turned to important port. We can enjoy the sight of Miho Peninsula, Izu Peninsula, Mt. Fuji and panoramic view of Nihon-daira from Seikenji Temple.



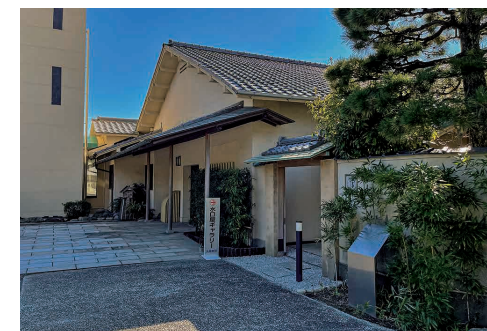
清見関跡礎石 **Remains of Kiyomi-ga-seki Station**
Emperor Tenmu set up the checking station to prevent invasion from the east. The remains pass down the huge size of the station.



清見潟 **Kiyomi-gata Coast**
In the past, there was a beautiful shore called Kiyomi-gata.



坐漁荘 **Zagyoso**
It is a house of Saionji Kinmochi who was inaugurated as a Prime Minister for two times. The shore was even closer to the house in the past.



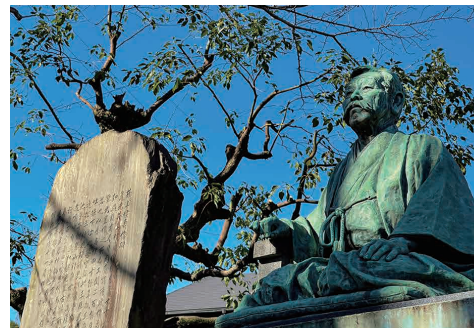
脇本陣水口屋跡 **Remains of Minakuchi-ya the Waki-honjin**
Served as a hotel for important guests, such as imperial family and foreign visitors. Gallery nearby preserves and exhibits documents and artifacts.



身延道 **Minobu-michi Path**
Starting point of Minobu-michi connected to Kōfu (Yamanashi Pref.) was a village of the followers of Kuon-ji Temple.



興津川からの富士山 **Mt. Fuji sight from Okitsu-gawa River**
The area has been a key point for transportation, as now JR Tokaido Line and No.1 National Road Bypass are maintained.



井上馨 **Marquess Inoue Kaoru**
The one who took the initiative of Meiji oligarchy loved the views from Okitsu.



宗像神社 **Munakata-jinja Shrine**
The site where three goddesses of sea voyage are enshrined used to be a landmark of Ejiri (Shimizu) Port.

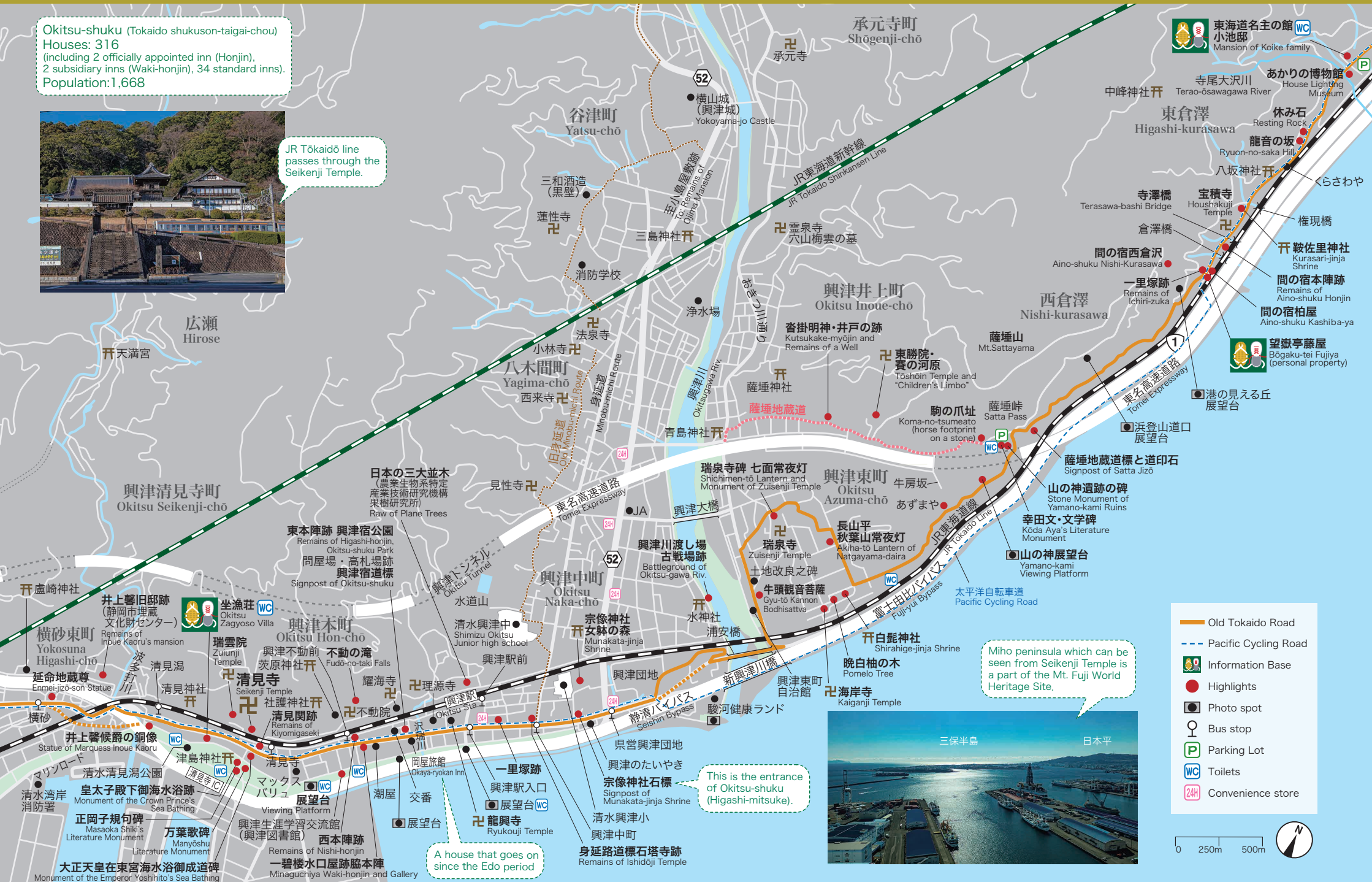
興津宿 Okitsu-shuku

The Temple Town of Seikenji Temple

Okitsu-shuku (Tokaido shukuson-taigai-chou)
Houses: 316
(including 2 officially appointed inn (Honjin),
2 subsidiary inns (Waki-honjin), 34 standard inns).
Population:1,668



JR Tōkaidō line
passes through the
Seikenji Temple.



Miho peninsula which can be seen from Seikenji Temple is a part of the Mt. Fuji World Heritage Site.

This is the entrance of Okitsu-shuku (Higashi-mitsuke).

A house that goes on since the Edo period

- Old Tokaido Road
- Pacific Cycling Road
- Information Base
- Highlights
- Photo spot
- Bus stop
- Parking Lot
- Toilets
- Convenience store

